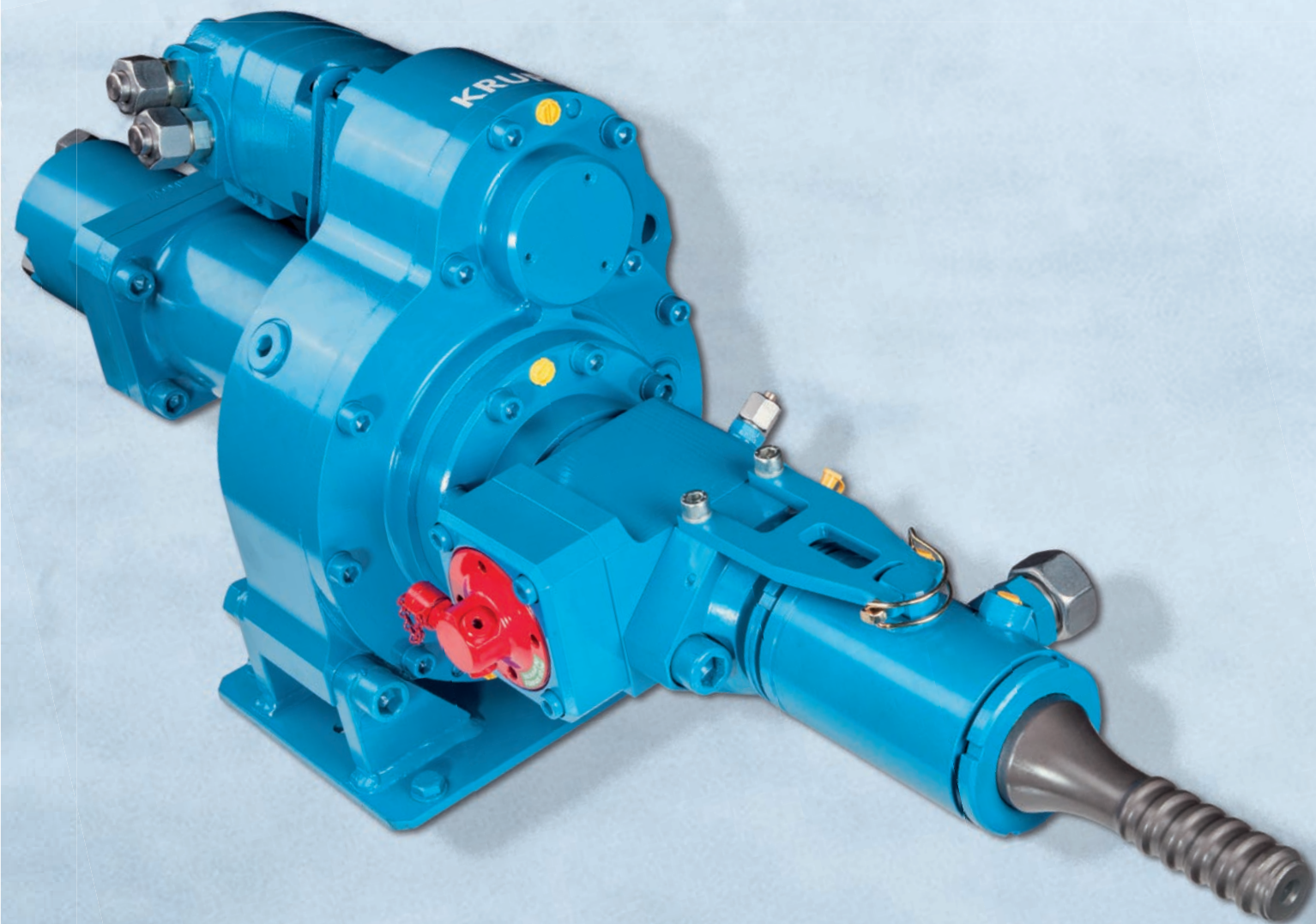


Materials Services  
Infrastructure

# KRUPP Drifter HB15.



thyssenkrupp



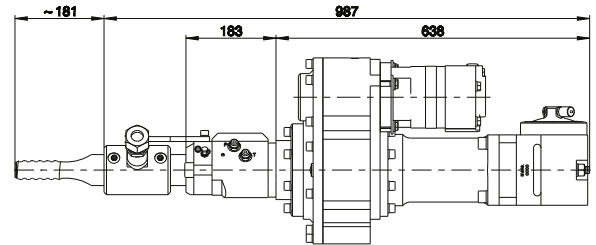
# KRUPP Drifter HB15

Compact design – the ideal drifter (hammer drill) for smaller drill rigs and excavator mounted drill masts.

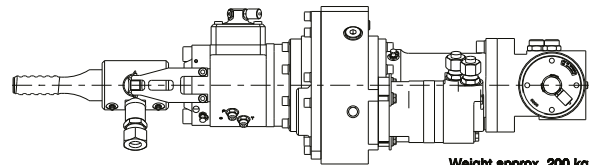


- For geotechnical drilling several motor versions with different torques and speeds are available.
- The optional built-in percussion damping mechanism improves retraction of casings and avoids blank impacts.
- Casing diameter up to 101 mm (< 4").
- Option: external flushing head fitted on an extended shank adaptor.

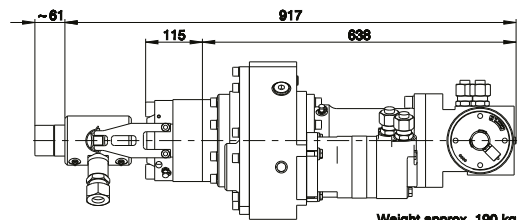
## Main Dimensions



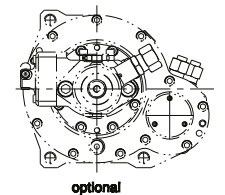
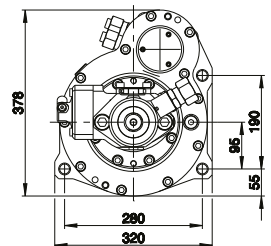
for Anchor-Drilling  
hydraulic damping mechanism and external flushing head



Weight approx. 200 kg

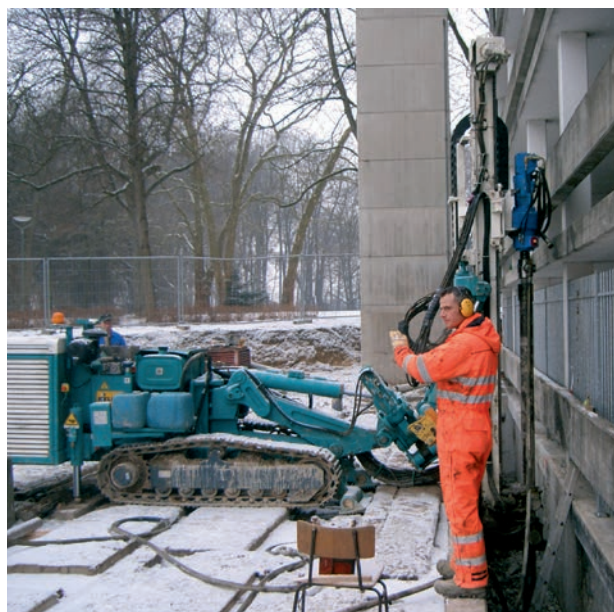


for Rock-Drilling  
external flushing head fitted to extended shank adaptor



optional

Retraction Force max. 36 kN



## Rotary Drives

Motor-Version 160 ccm																	
Pressure at rotary drive		140 bar				170 bar				200 bar				240 bar			
Gear		1 <sup>st</sup>				1 <sup>st</sup>				1 <sup>st</sup>				1 <sup>st</sup>			
Oil flow rate (lpm)	50	Torque (Nm)	1,000				1,300				1,500				1,800		
		Speed (rpm)	95				92				88				83		
	75	Torque (Nm)	1,000				1,300				1,500				1,800		
		Speed (rpm)	138				134				130				124		
	95	Torque (Nm)	1,000				1,300				1,500				1,800		
		Speed (rpm)	173				169				164				157		

1<sup>st</sup> gear

■ Intermittend mode (max. 10% per minute)

Motor-Version 245 ccm (standard)																	
Pressure at rotary drive		100 bar				140 bar				170 bar				200 bar			
Gear		1 <sup>st</sup>				1 <sup>st</sup>				1 <sup>st</sup>				1 <sup>st</sup>			
Oil flow rate (lpm)	50	Torque (Nm)	1,100				1,500				1,900				2,300		
		Speed (rpm)	65				63				61				58		
	75	Torque (Nm)	1,100				1,500				1,900						
		Speed (rpm)	94				91				88						
	95	Torque (Nm)	1,100				1,500				1,900						
		Speed (rpm)	118				115				112						

1<sup>st</sup> gear

■ Intermittend mode (max. 10% per minute)

Motor-Version 310 ccm																	
Pressure at rotary drive		70 bar				100 bar				140 bar				170 bar			
Gear		1 <sup>st</sup>				1 <sup>st</sup>				1 <sup>st</sup>				1 <sup>st</sup>			
Oil flow rate (lpm)	50	Torque (Nm)	900				1,400				2,000				2,500		
		Speed (rpm)	53				52				51				50		
	75	Torque (Nm)	900				1,400				2,000						
		Speed (rpm)	75				74				73						
	95	Torque (Nm)	900				1,300				1,900						
		Speed (rpm)	94				93				92						

1<sup>st</sup> gear

■ Intermittend mode (max. 10% per minute)

Other motor versions are available

### Percussion Unit

Operating pressure (kp/cm <sup>2</sup> )	160 - 180 bar
Oil flow rate (l/min)	70 - 90 lpm
Impact rate (min <sup>-1</sup> )	3000 bpm
Single impact energy (Joule)	270 Nm

### Shank Adaptors (Striker Bars)

Male thread	R32 left, R38 left, T38 left, T45 left, R55 right
Female thread	R32 left, R38 left, T38 links, R51 left
	TITAN 30/11 left, 40/16 left, 52/26 right
	IBO R32 left, R38 left, R51 left
Other shank adaptors (striker bars) are available	

Materials Services  
Infrastructure

thyssenkrupp Infrastructure GmbH  
Alte Liederbacher Str. 6  
36304 Alsfeld, Germany  
P: +49 6631 781-0  
F: +49 6631 781-113  
[machinery.tkinfrastructure@thyssenkrupp.com](mailto:machinery.tkinfrastructure@thyssenkrupp.com)  
[www.thyssenkrupp-infrastructure.com](http://www.thyssenkrupp-infrastructure.com)